



SP 620 EC-BL-L



SP 622 EC-BL-L

Product Features

- diaphragm mini pump for liquids (e.g. water)
- oil free / maintenance free
- self priming / leak tight
- reduced vibrations
- very low noise
- small size
- lightweight
- minimal current consumption
- available in 12 and 24 volt dc

Applications

- Industrial Applications
- Medical Applications
- Laboratory and Analytical Applications
- Cooling and Heating
- Cleaning
- Random Access Analyzers

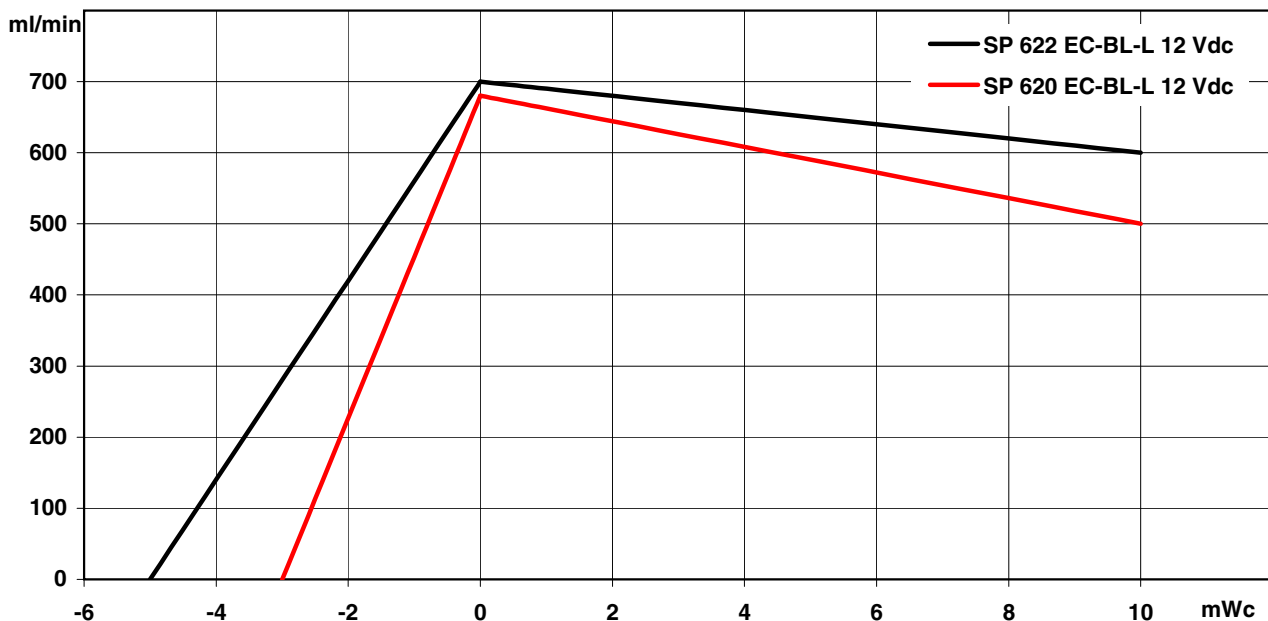


SP 620 / 622 EC-BL-L

The pumps listed below represent a typical selection of our wide range of eccentric pumps and are intended for initial tests. Customised versions for your individual application can be manufactured without additional costs - please contact us!

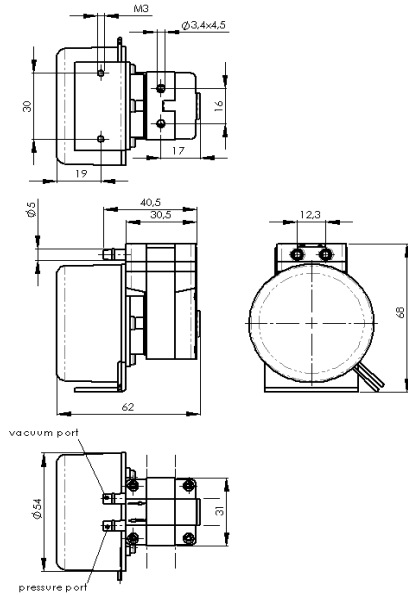
Designation	SP 620 EC-BL-L		SP 622 EC-BL-L	
Operating Voltage	12 Vdc	24 Vdc	12 Vdc	24 Vdc
Art.No.	7s52181	7s52182	7s52183	7s52184
Hydraulic Performance (measured with water at 20°C)				
Free Flow [ml/min]	680	680	700	700
Flow @ 10m H ₂ O [ml/min]	500	500	600	600
Max Press. Height [m H ₂ O]	>10	>10	>15	>15
<i>Although the pumps are able to produce pressure above 10 mWC, it is not recommended to exceed this limit!</i>				
Max Vacuum (dry) [mbar]	-200	-200	-250	-250
Max Suction Height (filled with water) [m H ₂ O]	-3,0	-3,0	-5,0	-5,0
Power Consumption				
Motor Type	Long life brushless with double ball bearings			
max Curr. at free flow [mA]	600	300	500	250
Construction				
Pump Body / Head	PPS customer specific - upon request			
Diaphragm, Valves	EPDM FKM / FFKM / PTFE			
Weight [g]	270		170	

Performance Curves

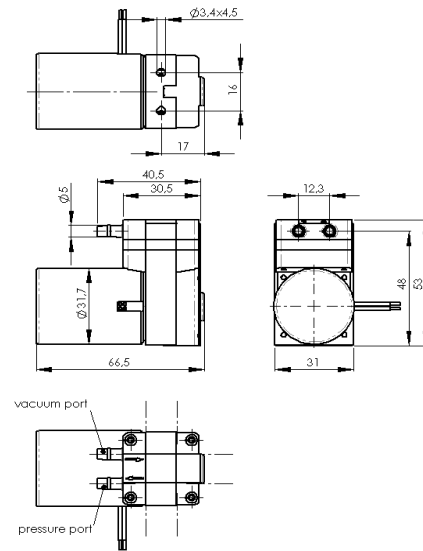




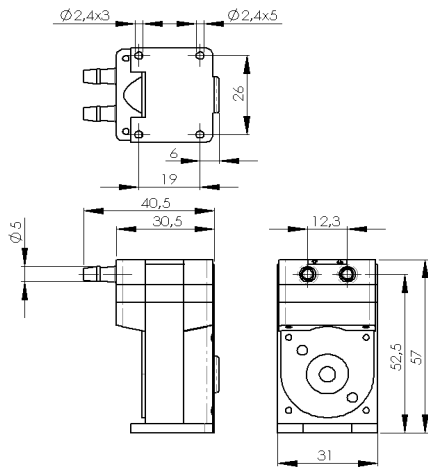
SP 620 EC-BL-L



SP 622 EC-BL-L



optional mounting plate



Standard: connection ports as shown.
Optional: 3 other port positions possible (see dashed lines)