



SP 600 EC-L
SP 620 EC-L



SP 600 EC-LC-L
SP 620 EC-LC-L

Product Features

- diaphragm mini pump for liquids (e.g. water)
- oil free / maintenance free
- self priming / leak tight
- reduced vibrations
- very low noise
- small size
- lightweight
- minimal current consumption
- available in 6 / 12 / 24 volt dc

Applications

- Industrial Applications
- Medical Applications
- Laboratory and Analytical Applications
- Cooling and Heating
- Cleaning
- Random Access Analyzers

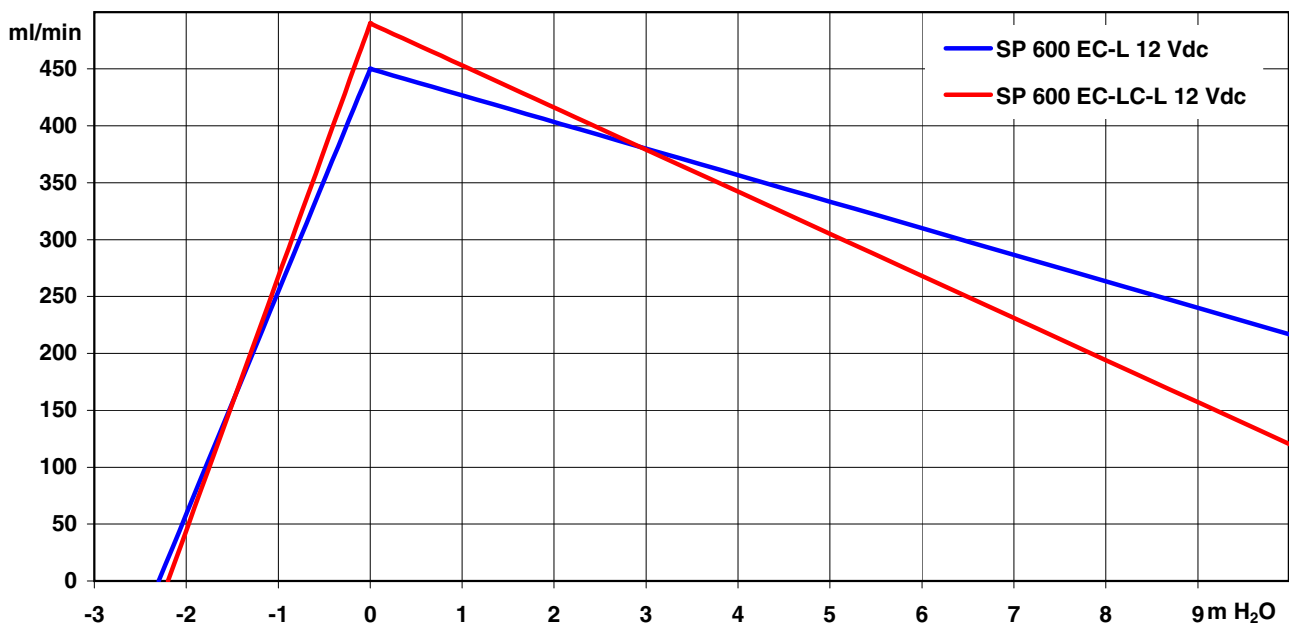


SP 600 EC-L / 620 EC-L

The pumps listed below represent a typical selection of our wide range of eccentric pumps and are intended for initial tests. Customised versions for your individual application can be manufactured without additional costs - please contact us!

Designation	SP 600 EC-LC-L		SP 600 EC-L	
Operating Voltage	12 Vdc	24 Vdc	12 Vdc	24 Vdc
Art.No.	7s52150	7s52151	7s52165	7s52166
Hydraulic Performance (measured with water at 20°C)				
Free Flow [ml/min]	490	490	450	450
Max Press. Height [m H ₂ O]	< 10	< 10	< 10	< 10
Although the pumps are able to produce pressure above 10 mWC, it is not recommended to exceed this limit!				
Max Vacuum (dry) [mbar]	-150	-150	-150	-150
Max Suction Height (filled with water) [m H ₂ O]	-2,2	-2,2	-2,3	-2,3
Power Consumption				
Motor Type	standard optional	Iron Core DC with Electromagnetic Suppression brushless		
max Curr. at free flow [mA]	510	260	310	160
Construction				
Pump Body / Head	standard optional	PPS customer specific - upon request		
Diaphragm, Valves	standard optional	EPDM FKM / FFKM / PTFE		
Weight [g]	165		184	

Performance Curves



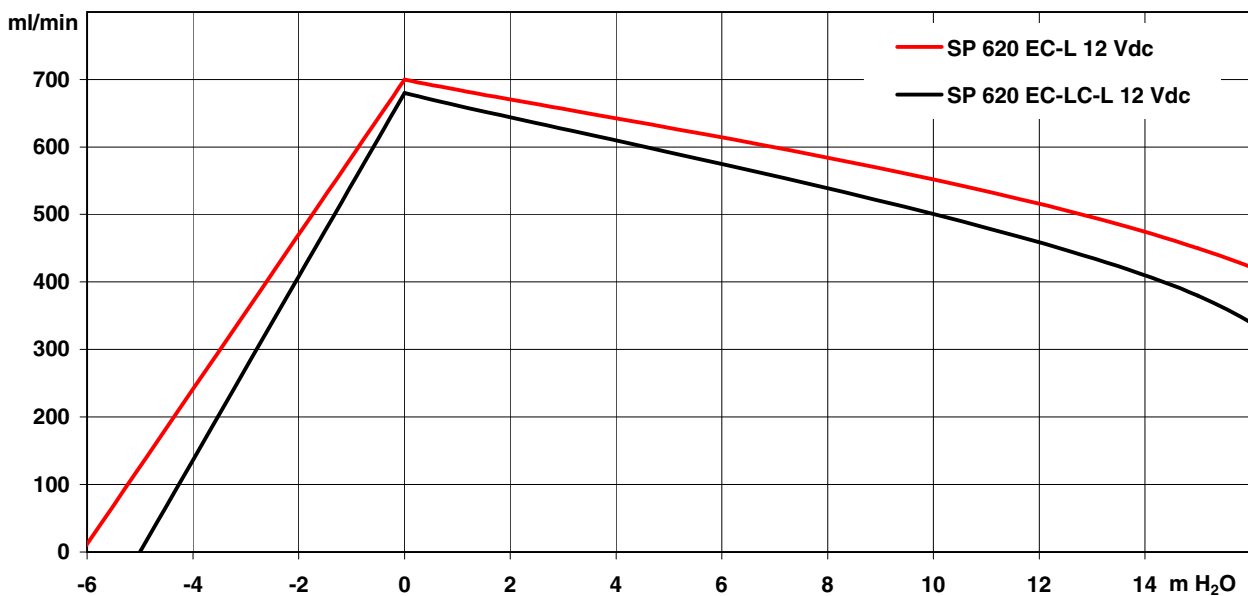


SP 600 EC-L / 620 EC-L

The pumps listed below represent a typical selection of our wide range of eccentric pumps and are intended for initial tests. Customised versions for your individual application can be manufactured without additional costs - please contact us!

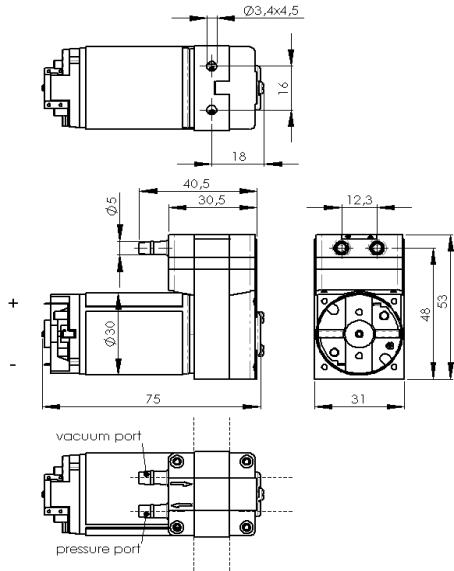
Designation	SP 620 EC-LC-L		SP 620 EC-L	
	Operating Voltage Art.No.	12 Vdc 7s57009	24 Vdc 7s57010	12 Vdc 7s57007
Hydraulic Performance (measured with water at 20°C)				
Free Flow [ml/min]	680	680	700	700
Flow at 15 mWC [ml/min]	380	380	450	450
Max Press. Height [m H ₂ O]	>10	>10	>15	>15
Higher performances on request Although the pumps are able to produce pressure above 10 mWC, it is not recommended to exceed this limit!				
Max Vacuum (dry) [mbar]	-200	-200	-250	-250
Max Suction Height (filled with water) [m H ₂ O]	-5,0	-5,0	-6,1	-6,1
Motor / Power Consumption				
Motor Type	Low Cost Iron Core		Long Life Double Ball Bearing	
standard				
optional	-		-	
Current [mA] @ free flow	600	300	500	250
Construction				
Pump Head	PPS customer specific - upon request			
standard				
optional				
Diaphragm, Valves	EPDM FKM / FFKM / PTFE			
standard				
optional				
Weight [g]	165		184	

Performance Curves

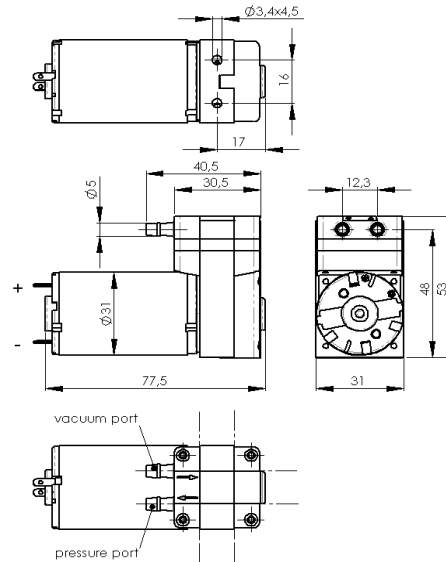




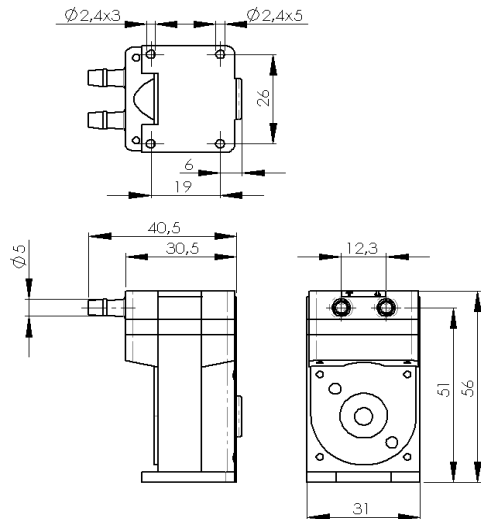
SP 600 EC-LC-L / 620 EC-LC-L



SP 600 EC-L / 620 EC-L



optional mounting plate



Standard: connection ports as shown.
Optional: 3 other port positions possible (see dashed lines)