



SP 200 EC-LC-L



SP 270 EC-DB-L



SP 270 EC-LC-L

#### Product Features

- oil free
- maintenance free
- reduced vibrations
- very low noise
- small size
- lightweight
- minimal current consumption
- self priming

#### Applications

- Industrial Applications
- Medical Applications
- Laboratory and Analytical Applications
- Cooling and Heating
- Cleaning



Schwarzer  
Precision

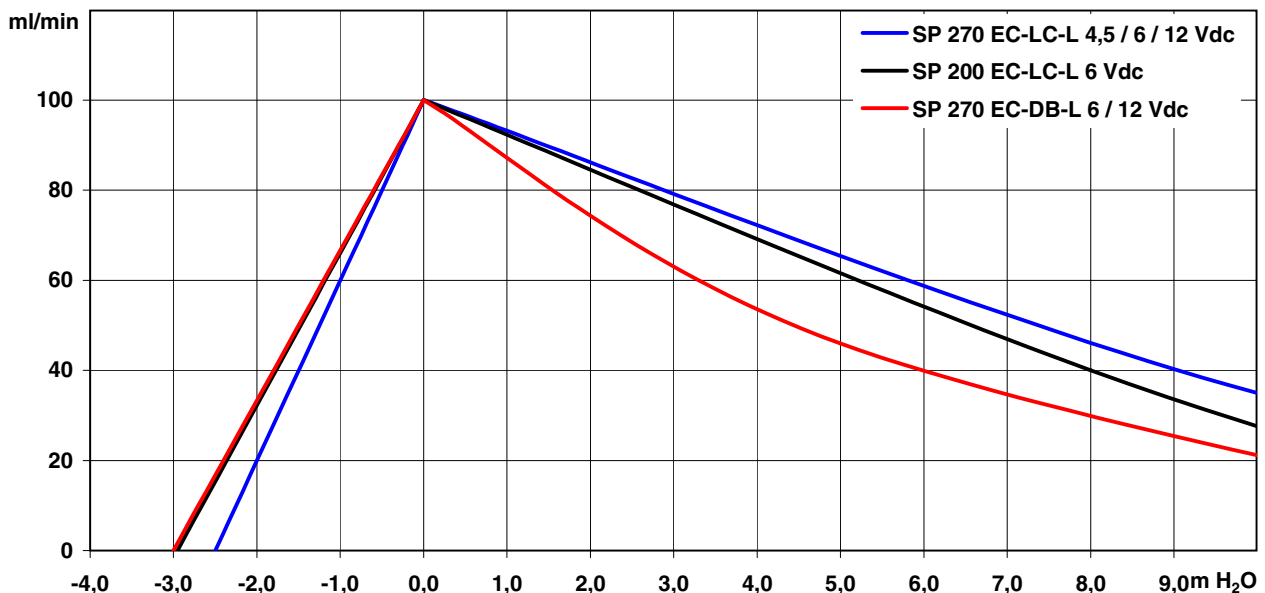


The pumps listed below represent a typical selection of our wide range of eccentric pumps and are intended for initial tests. Customised versions for your individual application would be made without extra costs - please contact us!

Designation	SP 200 EC-LC-L		SP 270 EC-LC-L		SP 270 EC-DB-L	
Operating Voltage* Art.No.	6 Vdc 7s55090	4,5 Vcd 7s55049	6 Vdc 7s55089	12 Vdc 7s55079	6 Vdc 7s55097	12 Vdc 7s55096
<b>Hydraulic Performance (measured with water)</b>						
Free Flow [ml/min] Max Press. Height [m H <sub>2</sub> O]	100 > 10	100 > 10	100 > 10	100 > 10	100 > 10	100 > 10
Although the pumps are able to produce pressure above 10 mWC, it is not recommended to exceed this limit!						
Max Vacuum (dry) [mbar]	-150	-200	-200	-200	-150	-150
Max Suction Height (filled with water) [m H <sub>2</sub> O]	-3,0	-2,5	-2,5	-2,5	-3,0	-3,0
<b>Power Consumption</b>						
Motor Type	standard optional	Iron Core DC -	Iron Core DC -		long life skew wound brushless	
max. curr. at free flow [mA]	240	130	110	100	100	100
<b>Construction</b>						
Pump Body / Head	standard optional		PPS PA6			
Diaphragm, Valves	standard optional		EPDM FKM			
Weight [g]	17,1		25,3		30,3	

\* other voltages on request

**Performance Curves**

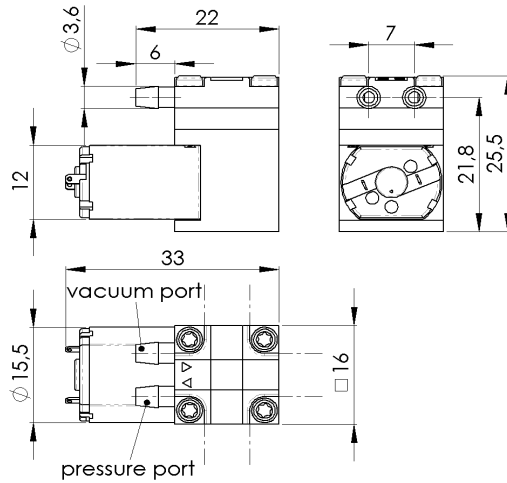




In order to reduce noise and vibration we recommend securing the pump in one of the following ways:

- with padded double sided adhesive tape
- with Velcro (hook and loop) tape for easy assembly and service
- Put the pump in a box lined with foam. Wires for the motor and tubing for the pump can go through a hole in the side of the box.

**SP 200 EC-LC-L**



**Mounting**

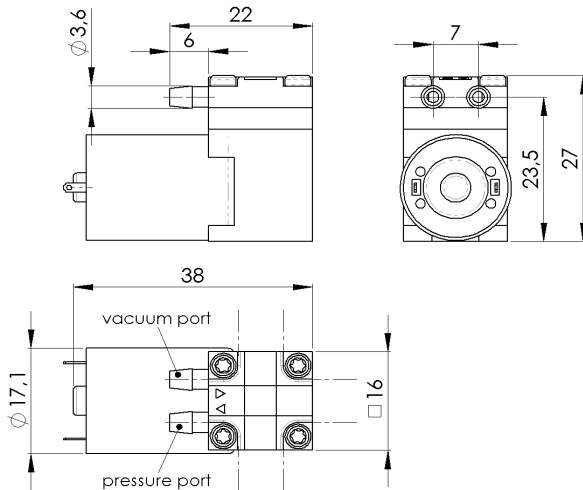


**Art.No.: 5.58.14**

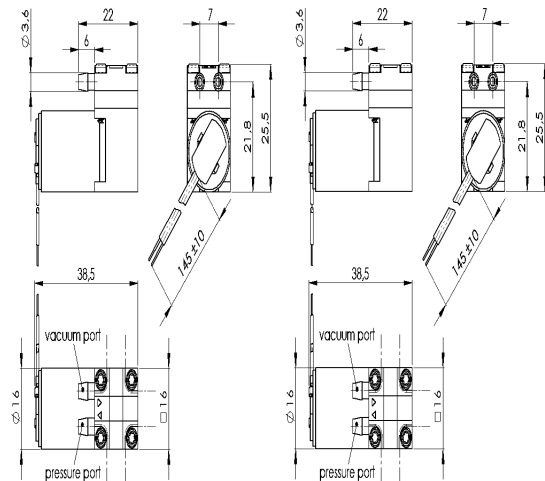
Metal Clip for:

- SP 270 EC-L
- SP 270 EC-LC-L

**SP 270 EC-LC-L**



**SP 270 EC-DB-L**



Standard: connection ports as shown. Optional: 3 other port positions possible (see dashed lines)