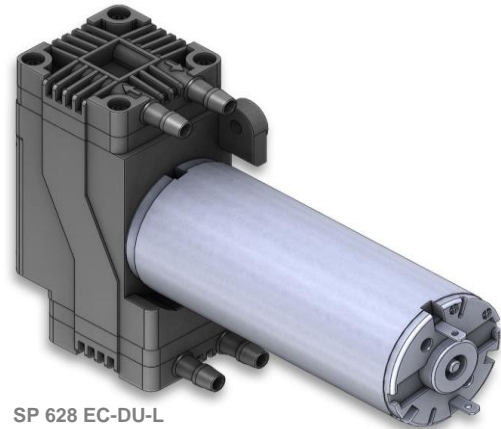
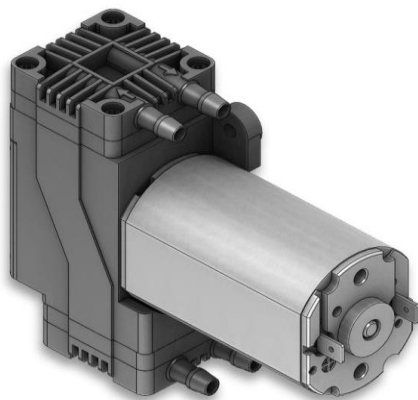


SP 620 EC-DU-L



SP 628 EC-DU-L



SP 625 EC-LC-DU-L

## We care.

Customised Pumps - No Additional Costs!

### Product Features

- Miniature diaphragm pump for liquids
- Chemical resistant versions available
- Use with two media or in serial or parallel operation
- From low-cost to durable drives with ball bearings
- Low weight and small size
- Self-priming
- Low noise and reduced vibrations
- Installation in any mounting orientation allows simple device integration
- Oil-free and maintenance-free

### Application Examples

- Industrial applications
- Medical applications
- Laboratory applications
- Analytical applications
- Cooling and heating
- Cleaning and disinfection
- Inkjet printers and reprography
- Fuel cells
- Pipetting
- Random access analyzers

and many more...

### Customisation

- We offer your customised precision pump without additional costs - even for small batches
- Outstanding quality
- Excellent technical consultation and service by experts
- More than 40 years experience in pump applications
- Fast delivery - order your sample now!



Schwarzer  
Precision

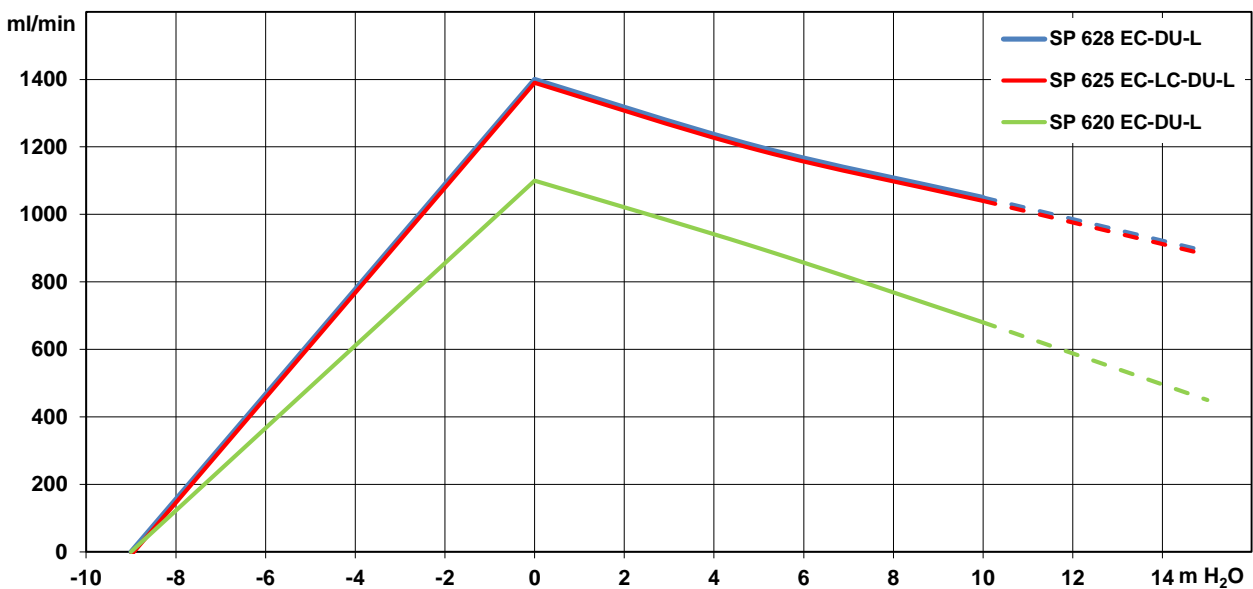


# SP 620 / 625 / 628 EC-DU-L

The pumps listed below represent a typical selection of our wide range of eccentric pumps and are intended for initial tests. **Customised versions** for your individual application would be made without additional costs - please contact us! All flow values given under norm conditions (according to DIN 1343). Optional materials can cause deviating performance values.

| Designation   | SP 620 EC-DU-L            |   | SP 625 EC-LC-DU-L                             |         | SP 628 EC-DU-L            |         |
|---|---------------------------|---|---|---------|---------------------------|---------|
| Operating Voltage [Vdc]   | 12                        | 24                                      | 12  | 24      | 12                        | 24      |
| Art.No.   | 7s57308                   | 7s57309                                 | 7s57316                                       | 7s57317 | 7s57318                   | 7s57319 |
| <b>Hydraulic Performance (measured with water at 20°C)</b>  |                           |   |   |         |                           |         |
| Free Flow [ml/min]  | 1100                      | 1100                                    | 1400  | 1400    | 1400                      | 1400    |
| <b>Pressure Side</b>  |                           |   |   |         |                           |         |
| Flow at 10 m H <sub>2</sub> O [ml/min]  | 680                       | 680                                     | 1050  | 1050    | 1050                      | 1050    |
| max. Pressure Height [m H <sub>2</sub> O]   | 10                        | 10                                      | 15  | 15      | 15                        | 15      |
| <i>Although the pumps are able to produce pressure above 10 m H<sub>2</sub>O, it is not recommended to exceed this limit!</i> |                           |   |   |         |                           |         |
| <b>Vacuum Side</b>  |                           |   |   |         |                           |         |
| max. Suction Height (filled system) [m H <sub>2</sub> O]  | -9.0                      | -9.0                                    | -9.0  | -9.0    | -9.0                      | -9.0    |
| max. Vacuum (dry) [mbar]  | -600                      | -600                                    | -600  | -600    | -600                      | -600    |
| <b>Motor / Power Consumption</b>  |                           |   |   |         |                           |         |
| Standard Motor  | iron core / ball bearings |   | iron core / ball bearing and sintered bearing |         | iron core / ball bearings |         |
| <i>For extended lifetime ball bearings are recommended!</i>   |                           |   |   |         |                           |         |
| max. Nominal Current [mA]   | 1000                      | 600                                     | 1300  | 700     | 1100                      | 600     |
| Optional Motor Type   | -                         | -                                       | -   | -       | -                         | -       |
| <b>Construction</b>   |                           |   |   |         |                           |         |
| Pump Head   | standard<br>optional      | PPS<br>customer specific - upon request |   |         |                           |         |
| Diaphragm, Valves   | standard<br>optional      | EPDM<br>FKM / FFKM / PTFE               |   |         |                           |         |
| Weight [g]  | 230                       |   | 250   |         | 320                       |         |

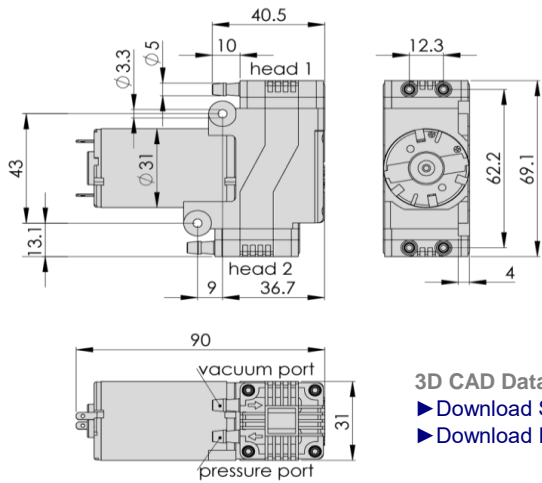
## Performance Curves





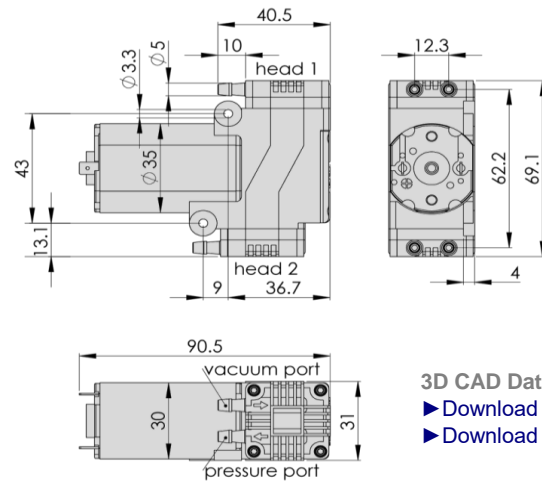
# Eccentric Diaphragm Pumps for Liquids SP 620 / 625 / 628 EC-DU-L

## SP 620 EC-DU-L



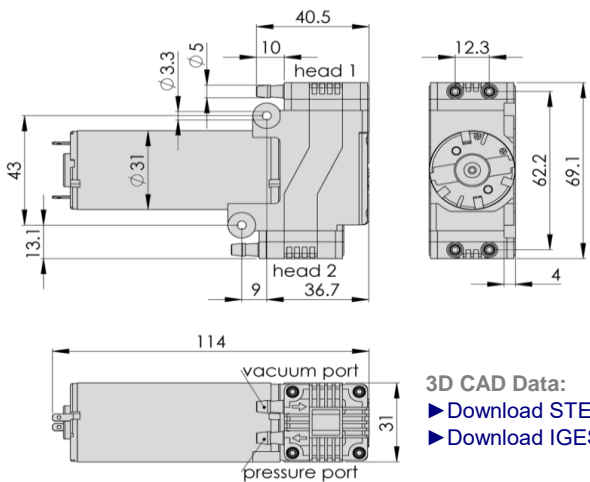
3D CAD Data:  
▶ Download STEP  
▶ Download IGES

## SP 625 EC-LC-DU-L



3D CAD Data:  
▶ Download STEP  
▶ Download IGES

## SP 628 EC-DU-L



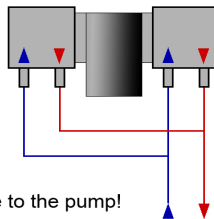
3D CAD Data:  
▶ Download STEP  
▶ Download IGES

Standard: connection ports as shown  
Optional: 3 other port positions possible

You can also download the 3D CAD data on the SP website:  
▶ [www.schwarzer.com/download](http://www.schwarzer.com/download)

### Tubing Diagram

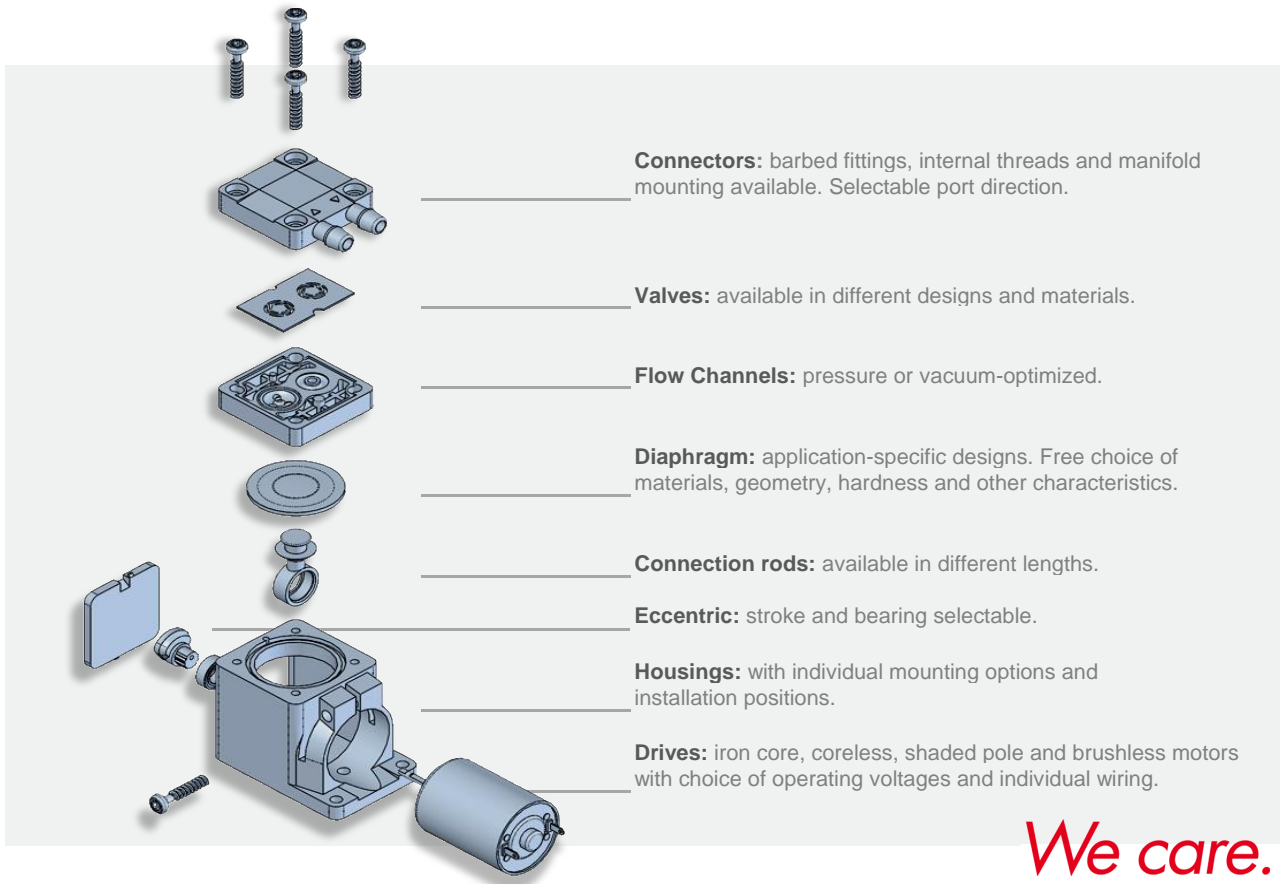
Note: parallel operation only!  
Serial operation can cause damage to the pump!





### Customising Examples

Customising without compromises is extremely important to us. We develop precision pumps in direct collaboration with our customers - with all parameters exactly adapted to the respective application. Thanks to the modular pump design, this is done without added development-related costs! We develop the ideal pump for you. Uncompromising and reliable.



### Installation Notes

In order to minimise noise and vibration we recommend securing the pump in one of the following ways:

- with rubber mounting (see "Accessories")
- with padded double sided adhesive tape
- with Velcro (hook and loop) tape for easy assembly and service
- Put the pump in a box lined with foam. Motor wires and tubing for the pump can lead through a hole in the side of the box.

### Accessories

Schwarzer Precision offers a comprehensive portfolio of pump accessories such as:

- mountings
- silencers + filters
- electronics
- check valves + pressure switches