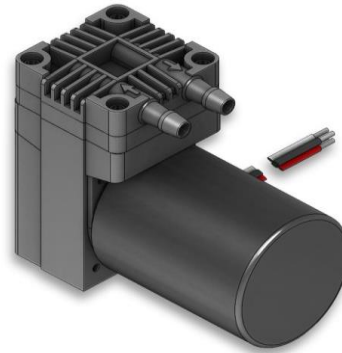


SP 620 EC-BL-L



SP 622 EC-BL-L

We care.

Customised Pumps - No Additional Costs!

Product Features

- Miniature diaphragm pump for liquids
- Chemical resistant versions available
- Very durable brushless drives with large control range
- Low weight and small size
- Self-priming
- Low noise and reduced vibrations
- Installation in any mounting orientation allows simple device integration
- Oil-free and maintenance-free

Application Examples

- Industrial applications
- Medical applications
- Laboratory applications
- Analytical applications
- Cooling and heating
- Cleaning and disinfection
- Inkjet printers and reprography
- Fuel cells
- Pipetting
- Random access analyzers

and many more...

Customisation

- We offer your customised precision pump without additional costs - even for small batches
- Outstanding quality
- Excellent technical consultation and service by experts
- More than 40 years experience in pump applications
- Fast delivery - order your sample now!

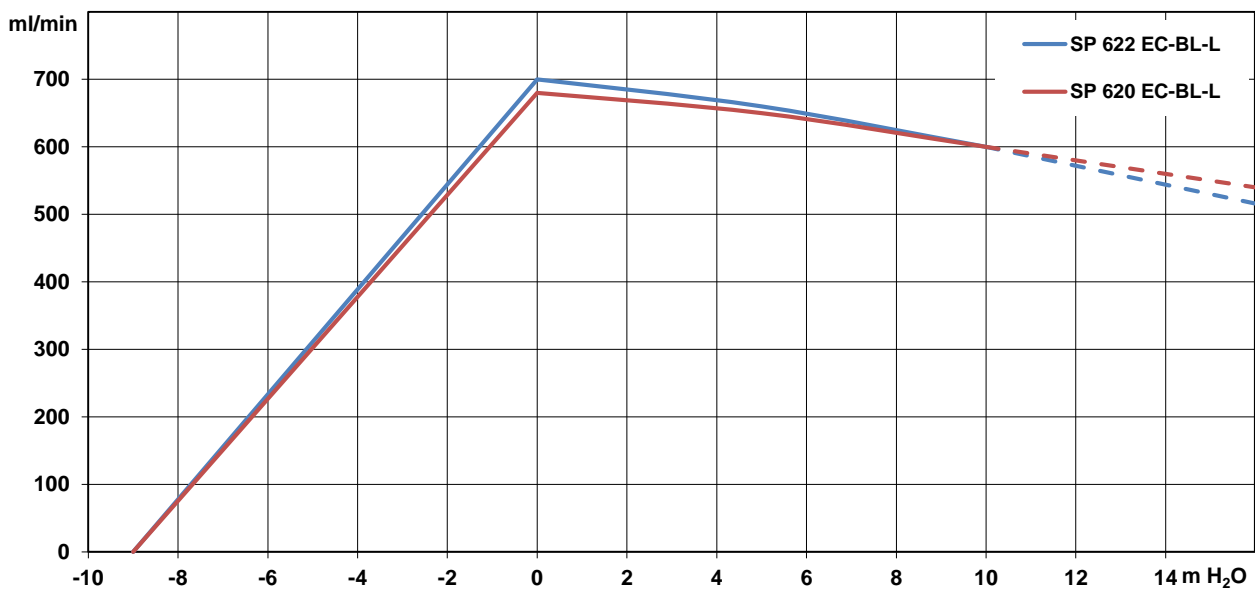


SP 620 / 622 EC-BL-L

The pumps listed below represent a typical selection of our wide range of eccentric pumps and are intended for initial tests. **Customised versions** for your individual application would be made without additional costs - please contact us! All flow values given under norm conditions (according to DIN 1343). Optional materials can cause deviating performance values.

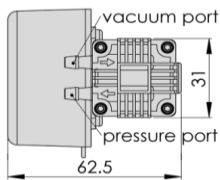
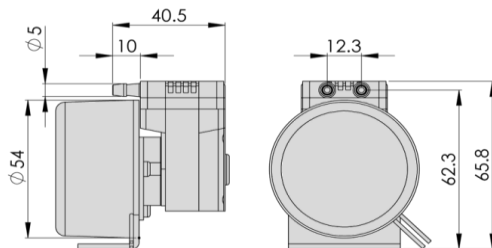
Designation	SP 620 EC-BL-L		SP 622 EC-BL-L	
Operating Voltage [Vdc]	12	24	12	24
Art.No.	7s57304	7s57305	7s57306	7s57307
Hydraulic Performance (measured with water at 20°C)				
Free Flow [ml/min]	680	680	700	700
Pressure Side				
Flow at 10 m H ₂ O [ml/min]	600	600	600	600
max. Pressure Height [m H ₂ O]	10.0	10.0	15.0	15.0
Although the pumps are able to produce pressure above 10 m H ₂ O, it is not recommended to exceed this limit!				
Vacuum Side				
max. Suction Height (filled system) [m H ₂ O]	-9.0	-9.0	-9.0	-9.0
max. Vacuum (dry) [mbar]	-600	-600	-600	-600
Motor / Power Consumption				
Standard Motor	brushless, analog control / ball bearings		brushless, analog or PWM control / ball bearings	
max. Nominal Current [mA]	700	400	600	400
Optional Motor Type	brushless, analog or PWM control or without internal electronics		brushless, analog control or without internal electronics	
Construction				
Pump Head	standard optional	PPS customer specific (upon request)		
Diaphragm, Valves	standard optional	EPDM FKM / FFKM / PTFE		
Weight [g]	280		190	

Performance Curves



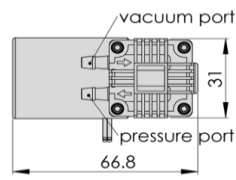
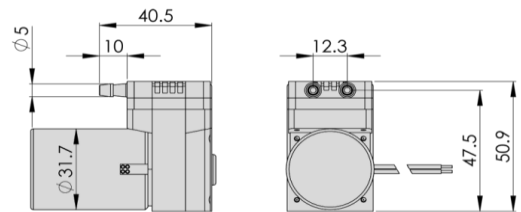


SP 620 EC-BL-L



3D CAD Data:
▶ Download STEP
▶ Download IGES

SP 622 EC-BL-L



3D CAD Data:
▶ Download STEP
▶ Download IGES

Standard: connection ports as shown
Optional: 3 other port positions possible

You can also download the 3D CAD data on the SP website:
▶ www.schwarzer.com/download

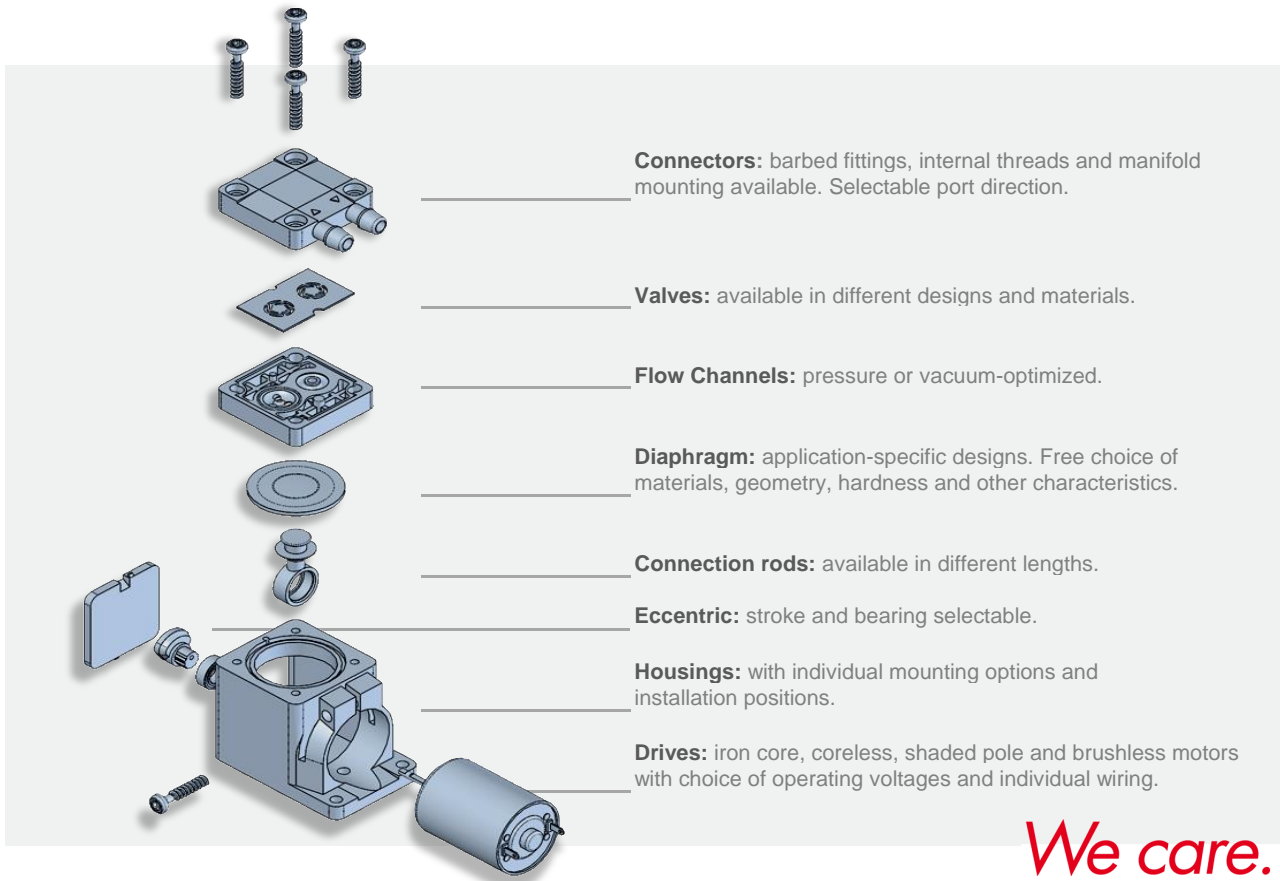


Schwarzer
Precision



Customising Examples

Customising without compromises is extremely important to us. We develop precision pumps in direct collaboration with our customers - with all parameters exactly adapted to the respective application. Thanks to the modular pump design, this is done without added development-related costs! We develop the ideal pump for you. Uncompromising and reliable.



Installation Notes

In order to minimise noise and vibration we recommend securing the pump in one of the following ways:

- with rubber mounting (see "Accessories")
- with padded double sided adhesive tape
- with Velcro (hook and loop) tape for easy assembly and service
- Put the pump in a box lined with foam. Motor wires and tubing for the pump can lead through a hole in the side of the box.

Accessories

Schwarzer Precision offers a comprehensive portfolio of pump accessories such as:

- mountings
- silencers + filters
- electronics
- check valves + pressure switches