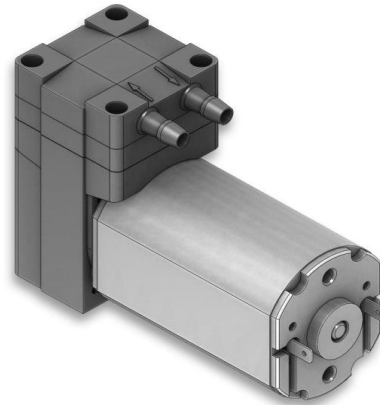
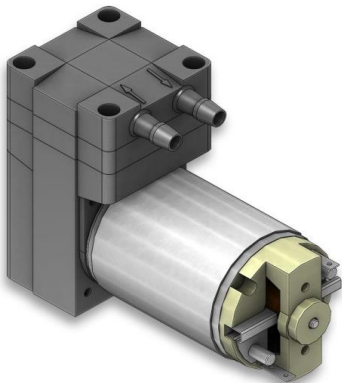
SP 600 EC
SP 620 EC

SP 625 EC-LC

SP 600 EC-LC
SP 620 EC-LC

We care.

Customised Pumps - No Additional Costs!

Product Features

- Miniature diaphragm pump for gases
- Vacuum or pressure optimized pump design
- High efficiency and available in common supply voltages
- From low-cost to durable drives
- Low weight and small size
- Applicable for noise- and vibration-sensitive environments (i.e. hospitals, personal protection equipment, etc.)
- Installation in any mounting orientation allows simple device integration
- Leak-tight, oil-free and maintenance-free

Application Examples

Particularly suitable for portable and stationary devices such as:

- Gas analysers
- Anaesthesia monitoring
- Auto samplers
- Dental vacuum pump
- Exhaust or flue gas analyzers
- Blood pressure monitoring
- Industrial pressure and vacuum
- Chromatography
- Pipetting devices

and many more...

Customisation


- We offer your customised precision pump without additional costs - even for small batches
- Our modular concept allows easy adaptations
- Outstanding quality - Made in Germany
- Excellent technical consultation and service by experts
- More than 40 years experience in pump applications
- Manifold mounting
- Fast delivery - order your sample now!





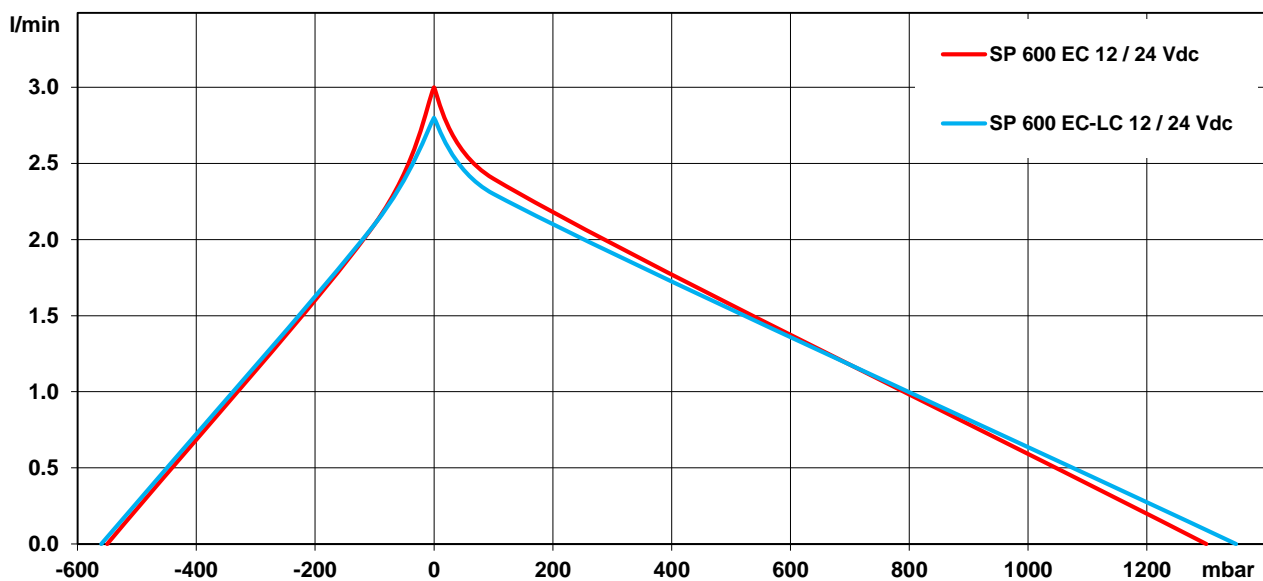
SP 600 / 620 / 625 EC

The pumps listed below represent a typical selection of our wide range of eccentric pumps and are intended for initial tests. **Customised versions** for your individual application would be made without additional costs - please contact us! All flow values given under norm conditions (according to DIN 1343). Optional materials can cause deviating performance values.

| Designation | SP 600 EC | | SP 600 EC-LC | |
|----------------------------------|---------------------------|---|-------------------------------|---------|
| Art. No. | 7s52115 |  7s52116 [1] | 7s52100 | 7s52101 |
| Operating Voltage [Vdc] | 12 | 24 | 12 | 24 |
| Pneumatic Performance | | | | |
| Free Flow [l/min] | 3.0 | 3.0 | 2.8 | 2.8 |
| Pressure Side | | | | |
| Flow at 100 mbar [l/min] | 2.4 | 2.4 | 2.3 | 2.3 |
| max. Pressure [mbar] | 1300 | 1300 | 1350 | 1350 |
| Vacuum Side | | | | |
| Flow at -100 mbar [l/min] | 2.1 | 2.1 | 2.1 | 2.1 |
| max. Vacuum [mbar] | -550 | -550 | -560 | -560 |
| Motor / Power Consumption | | | | |
| Standard Motor Type | iron core / ball bearings | | iron core / sintered bearings | |
| max. Nominal Current [mA] | 360 | 180 | 390 | 195 |
| Optional Motor Type | sintered bearings | | - | |
| Construction | | | | |
| Pump Head | standard | PPS | | |
| | optional | customer specific (upon request) | | |
| Diaphragm, Valves | standard | EPDM | | |
| | optional | FKM / FFKM / PTFE | | |
| Weight [g] | 184 | | 165 | |

[1] These pumps are our basic types for initial tests. Quick availability: **Shipping within 24 hours!**

Performance Curves



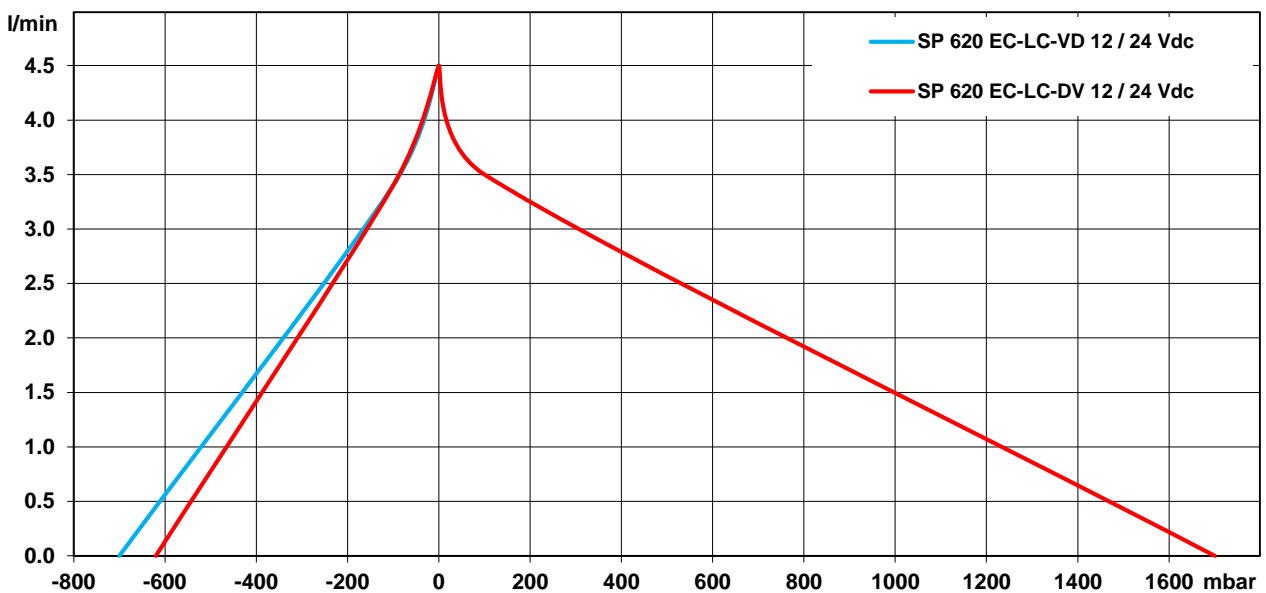


SP 600 / 620 / 625 EC

The pumps listed below represent a typical selection of our wide range of eccentric pumps and are intended for initial tests. **Customised versions** for your individual application would be made without additional costs - please contact us! All flow values given under norm conditions (according to DIN 1343). Optional materials can cause deviating performance values.

| Designation | SP 620 EC-LC-DV | | SP 620 EC-LC-VD | |
|----------------------------------|-------------------------------|---|-----------------|---------|
| Art. No. | 7s57004 | 7s57005 | 7s57223 | 7s57224 |
| Operating Voltage [Vdc] | 12 | 24 | 12 | 24 |
| Pneumatic Performance | | | | |
| Free Flow [l/min] | 4.5 | 4.5 | 4.5 | 4.5 |
| Pressure Side | | | | |
| Flow at 100 mbar [l/min] | 3.5 | 3.5 | - | - |
| max. Pressure [mbar] | 1700 | 1700 | - | - |
| Vacuum Side | | | | |
| Flow at -100 mbar [l/min] | 3.4 | 3.4 | 3.4 | 3.4 |
| max. Vacuum [mbar] | -620 | -620 | -700 | -700 |
| Higher performances on request | | | | |
| Motor / Power Consumption | | | | |
| Standard Motor Type | iron core / sintered bearings | | | |
| max. Nominal Current [mA] | 690 | 330 | 690 | 330 |
| Optional Motor Type | - | | | |
| Construction | | | | |
| Pump Head | standard optional | PPS customer specific (upon request) | | |
| Diaphragm, Valves | standard optional | EPDM FKM / FFKM / PTFE | | |
| Weight [g] | 165 | | 165 | |

Performance Curves





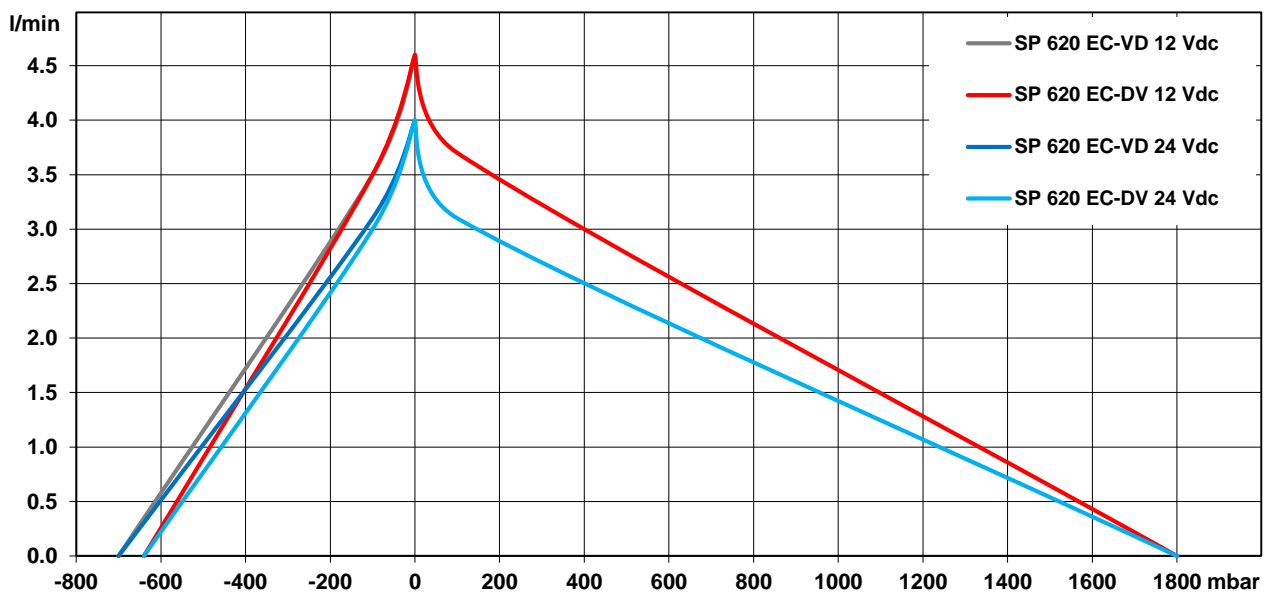
SP 600 / 620 / 625 EC

The pumps listed below represent a typical selection of our wide range of eccentric pumps and are intended for initial tests. **Customised versions** for your individual application would be made without additional costs - please contact us! All flow values given under norm conditions (according to DIN 1343). Optional materials can cause deviating performance values.

| Designation | SP 620 EC-DV | | SP 620 EC-VD | |
|----------------------------------|---------------------------|---|--------------|-------------|
| Art. No. | 7s57002 | 7s57003 [1] | 7s57016 | 7s57063 [1] |
| Operating Voltage [Vdc] | 12 | 24 | 12 | 24 |
| Pneumatic Performance | | | | |
| Free Flow [l/min] | 4.6 | 4.0 | 4.6 | 4.0 |
| Pressure Side | | | | |
| Flow at 100 mbar [l/min] | 3.7 | 3.1 | - | - |
| max. Pressure [mbar] | 1800 | 1800 | - | - |
| Vacuum Side | | | | |
| Flow at -100 mbar [l/min] | 3.5 | 3.0 | 3.5 | 3.1 |
| max. Vacuum [mbar] | -640 | -640 | -700 | -700 |
| Higher performances on request | | | | |
| Motor / Power Consumption | | | | |
| Standard Motor Type | iron core / ball bearings | | | |
| max. Nominal Current [mA] | 550 | 290 | 550 | 290 |
| Optional Motor Type | sintered bearings | | | |
| Construction | | | | |
| Pump Head | standard optional | PPS customer specific (upon request) | | |
| Diaphragm, Valves | standard optional | EPDM FKM / FFKM / PTFE | | |
| Weight [g] | 184 | | 184 | |

[1] These pumps are our basic types for initial tests. Quick availability: **Shipping within 24 hours!**

Performance Curves



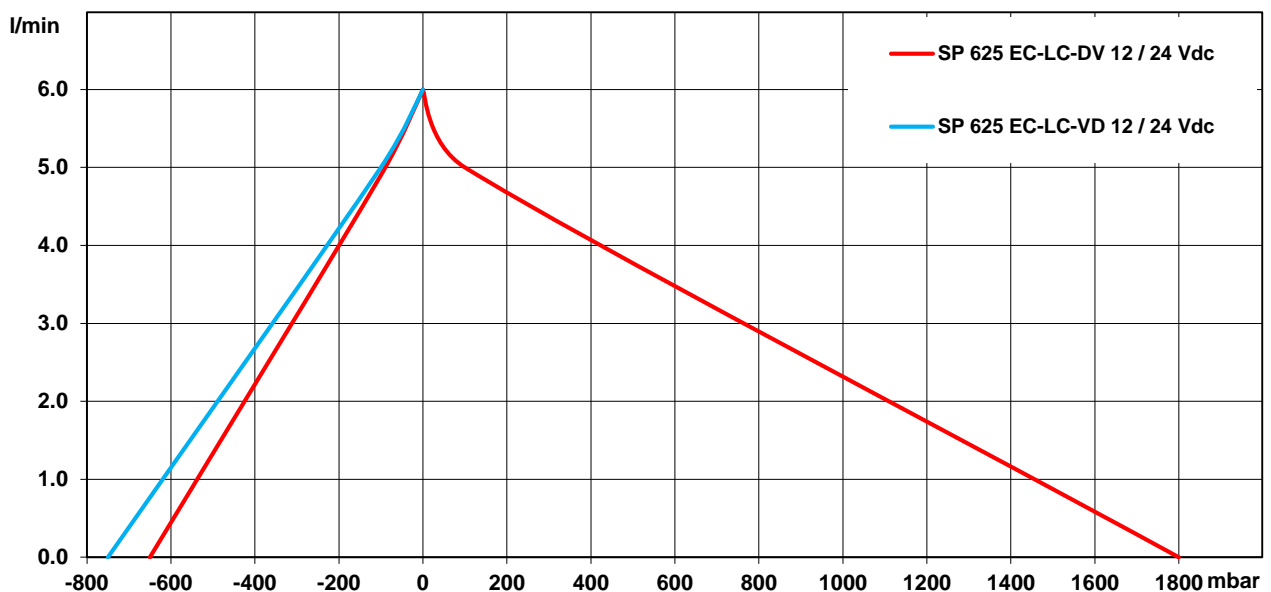


SP 600 / 620 / 625 EC

The pumps listed below represent a typical selection of our wide range of eccentric pumps and are intended for initial tests. **Customised versions** for your individual application would be made without additional costs - please contact us! All flow values given under norm conditions (according to DIN 1343). Optional materials can cause deviating performance values.

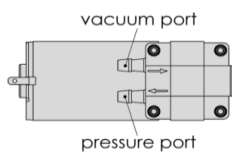
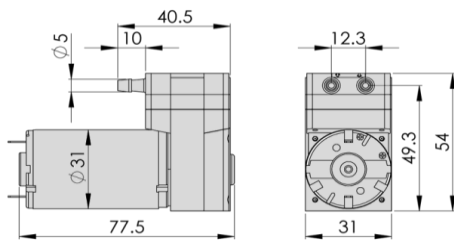
| Designation | SP 625 EC-LC-DV | | SP 625 EC-LC-VD | |
|----------------------------------|---|---|-----------------|---------|
| Art. No. | 7s57276 | 7s57277 | 7s57278 | 7s57279 |
| Operating Voltage [Vdc] | 12 | 24 | 12 | 24 |
| Pneumatic Performance | | | | |
| Free Flow [l/min] | 6.0 | 6.0 | 6.0 | 6.0 |
| Pressure Side | | | | |
| Flow at 100 mbar [l/min] | 5.0 | 5.0 | - | - |
| max. Pressure [mbar] | 1800 | 1800 | - | - |
| Vacuum Side | | | | |
| Flow at -100 mbar [l/min] | 4.9 | 4.9 | 5.0 | 5.0 |
| max. Vacuum [mbar] | -650 | -650 | -750 | -750 |
| Higher performances on request | | | | |
| Motor / Power Consumption | | | | |
| Standard Motor Type | iron core / ball bearing and sintered bearing | | | |
| max. Nominal Current [mA] | 900 | 500 | 900 | 500 |
| Optional Motor Type | - | | | |
| Construction | | | | |
| Pump Head | standard optional | PPS customer specific (upon request) | | |
| Diaphragm, Valves | standard optional | EPDM FKM / FFKM / PTFE | | |
| Weight [g] | 220 | | 220 | |

Performance Curves



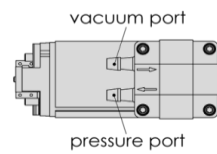
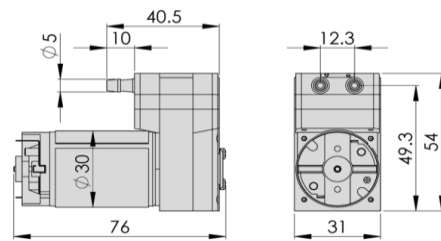


SP 600 EC / 620 EC-DV / 620 EC-VD



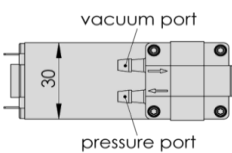
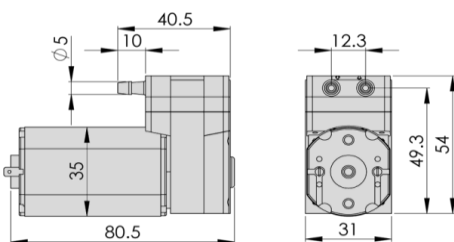
3D CAD Data:
▶ Download STEP
▶ Download IGES

SP 600 EC-LC / 620 EC-LC-DV / 620 EC-LC-VD



3D CAD Data:
▶ Download STEP
▶ Download IGES

SP 625 EC-LC-DV / 625 EC-LC-VD



3D CAD Data:
▶ Download STEP
▶ Download IGES

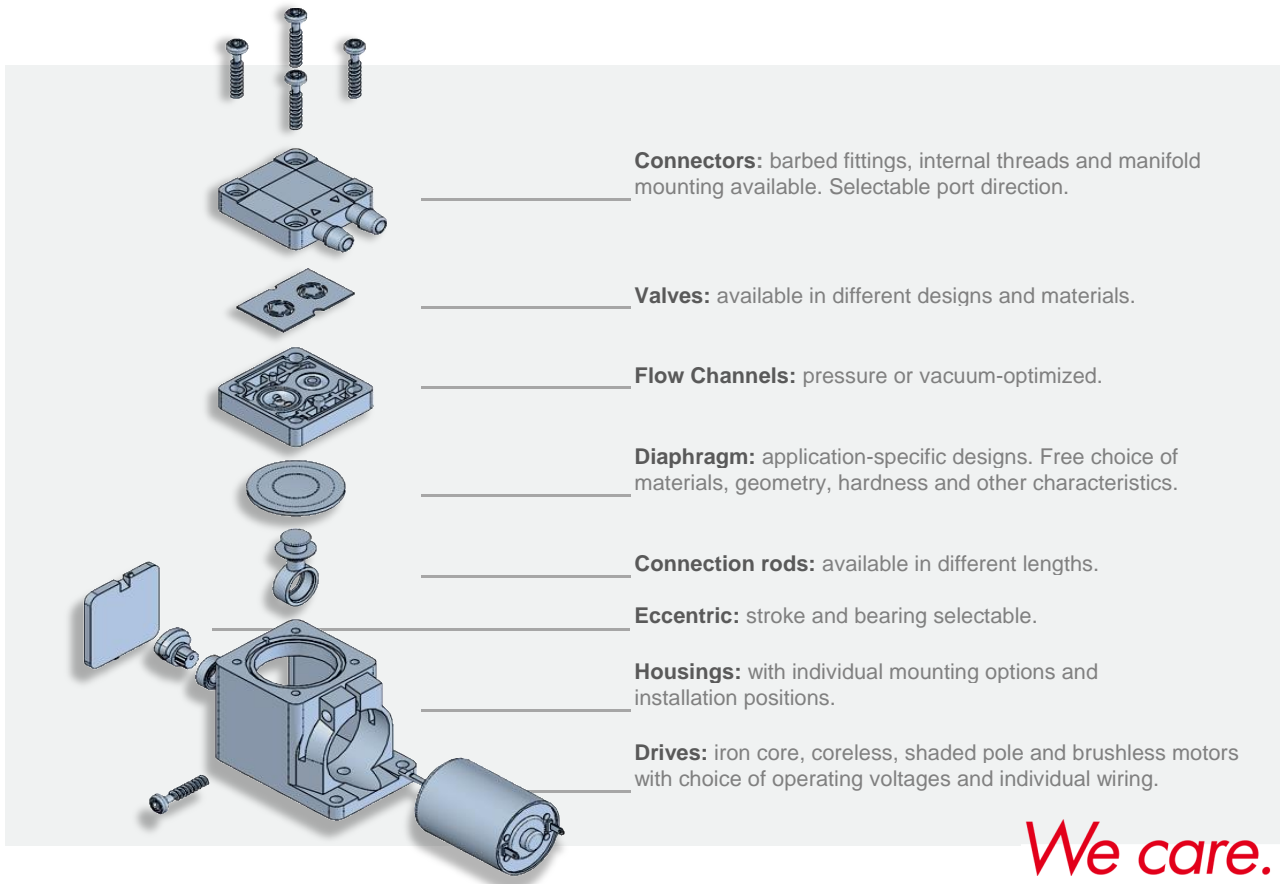
Standard: connection ports as shown
Optional: 3 other port positions possible

You can also download the 3D CAD data on the SP website:
▶ www.schwarzer.com/download



Customising Examples

Customising without compromises is extremely important to us. We develop precision pumps in direct collaboration with our customers - with all parameters exactly adapted to the respective application. Thanks to the modular pump design, this is done without added development-related costs! We develop the ideal pump for you. Uncompromising and reliable.



Installation Notes

In order to minimise noise and vibration we recommend securing the pump in one of the following ways:

- with rubber mounting (see "Accessories")
- with padded double sided adhesive tape
- with Velcro (hook and loop) tape for easy assembly and service
- Put the pump in a box lined with foam. Motor wires and tubing for the pump can lead through a hole in the side of the box.

Accessories

Schwarzer Precision offers a comprehensive portfolio of pump accessories such as:

- mountings
- silencers + filters
- electronics
- check valves + pressure switches